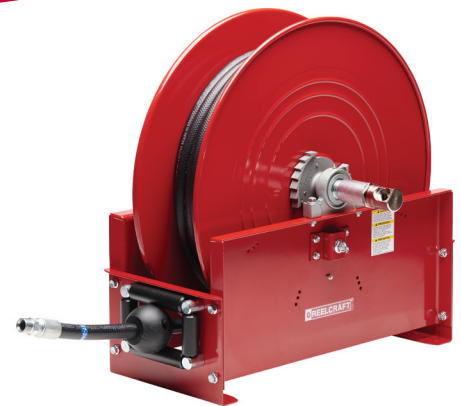




SERIES 9000

Ultimate Duty Spring Retractable Reels



E9350 OMPBW

Ideal for service trucks, permanent service, or plant work areas

Substantial base frame – full width frame has the greatest amount of mounting area and overall strength of reels within its class

Latch and ratchet are made of heavy duty cast aluminum to limit the opportunity for premature wear

Full flow stress-free swivel design – full flow swivel combines the highest grade seal design and materials with bearing areas to ensure maximum service life

Reels are shipped in the bottom wind position with right hand inlet; see Hose Guide Roller Position for other options

Meets or exceeds military vibration for Truck Transport test MIL-STD-810F 500,000 mile equivalent



AIR



WATER



OIL

I.D. Hose Sizes

1/2", 3/4", 1", 1 1/2"

Reel Accessories

Part	Part Number
Hose Guide Roller Conversion Kits	S602907-35, S602909-35, S602910-35, S602915-35, S602919-35
Bumper Stops	Visit reelcraft.com for more information
Hose Assemblies	Visit reelcraft.com for more information



Interactive Reel Catalog



1.800.444.3134 | reelcraft.com

Model with Hose and Bumper	Shipping Weight		Hose I.D.		Hose O.D.		Hose Length		Max Pressure		NPT(M) Hose Outlet	NPT(F) Reel Inlet	NPT(F) Reel Outlet	Size Index #
	lbs	kg	in	mm	in	mm	ft	m	psi	bar	in	in	in	
Low Pressure Air/Water Reels			Maximum Temperature 150°F (65°C)				Maximum Working Pressure is at 70°F (20°C)							
E9275 OLPBW	122	55	1/2	13	0.75	19	75	23	300	21	1/2	1/2	1/2	1
E9299 OLPBW	127	58	1/2	13	0.75	19	100	30	300	21	1/2	1/2	1/2	1
E9350 OLPBW	140	64	3/4	19	1.075	27	50	15	250	17	3/4	3/4	3/4	1
E9375 OLPBW	152	69	3/4	19	1.075	27	75	23	250	17	3/4	3/4	3/4	1
E9399 OLPBW	143	65	3/4	19	1.075	27	100	30	250	17	3/4	3/4	3/4	2
E9450 OLPBW	157	71	1	25	1.375	35	50	15	250	17	3/4	1	1	1
G9465 OLPBW	157	71	1	25	1.48	38	65	20	250	17	3/7	1	1	3
Medium Pressure Oil Reels			Maximum Temperature 210°F (99°C)											
E9275 OMPBW	131	59	1/2	13	0.82	21	75	23	3000	207	1/2	1/2	1/2	1
E9350 OMPBW	142	64	3/4	19	1.188	30	50	15	1250	86	3/4	3/4	3/4	1

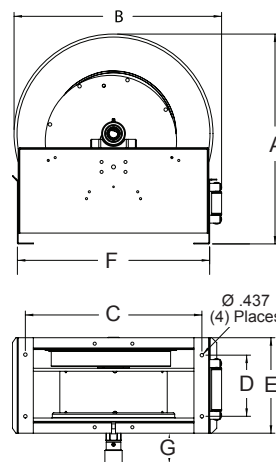
Low pressure reels supplied with PVC hose. Medium pressure reels supplied with S.A.E. 100R1-AT (3/4") one wire braid hose.

Model without Hose and Bumper	Shipping Weight		Hose Capacity					Max Pressure		NPT(F) Reel Inlet	NPT(F) Reel Outlet	Size Index #	
	lbs	kg	Hose I.D.		Hose O.D.		Hose Length		psi	bar	in		in
Low Pressure Air/Water Reels			Maximum Temperature 210°F (99°C)										
E9200 OLPBW	115	52	1/2	13	0.75	19	75	23	500	35	1/2	1/2	1
E9305 OLPBW	115	52	3/4	19	1.075	27	100	30	500	35	3/4	3/4	2
E9400 OLPBW	115	52	1	25	1.375	35	50	15	500	35	1	1	1
G9600 OLPBW*	157	71	1 1/2	38	2.000	51	50	15	600	41	1 1/2	1 1/2	4
Medium Pressure Oil Reels			Maximum Temperature 210°F (99°C)										
E9200 OMPBW	117	53	1/2	13	0.82	21	75	23	3000	207	1/2	1/2	1
E9300 OMPBW	117	53	3/4	19	1.188	30	50	15	3000	207	3/4	3/4	1
G9300 OMPBW*	160	73	3/4	19	1.188	30	75	23	3000	207	3/4	1	3
E9400 OMPBW	120	54	1	25	1.480	38	50	15	3000	207	1	1	1
G9400 OMPBW*	159	72	1	25	1.480	38	75	23	3000	207	1	1	3

*Series G9000 reels have an external drive spring and a removable gooseneck.

Dimensions - Size Index

	1		2		3		4		5	
	in	mm	in	mm	in	mm	in	mm	in	mm
A	26 3/8	670	26 3/8	670	26 1/4	667	26 1/4	667	26 3/8	670
B	26 1/4	667	26 1/4	667	26 1/4	667	26 1/4	667	26 1/4	667
C	22 1/4	565	22 1/4	565	22	559	22	559	22 1/4	565
D	7 3/4	197	7 3/4	197	8	203	9 1/2	241	13 1/2	343
E	12	305	13 3/8	340	14 5/8	371	17 1/4	438	17 3/4	451
F	24 1/8	613	24 1/8	613	24 1/4	616	24 1/4	616	24 1/8	613
G	4 3/4	121	4 1/2	114	4 7/8	124	3 7/8	98	3 7/8	98



Additional Models Available for:



FUEL



STAINLESS STEEL FLUID PATH

